



**Gianni
Ferrari**

TURBO 223 - 322D

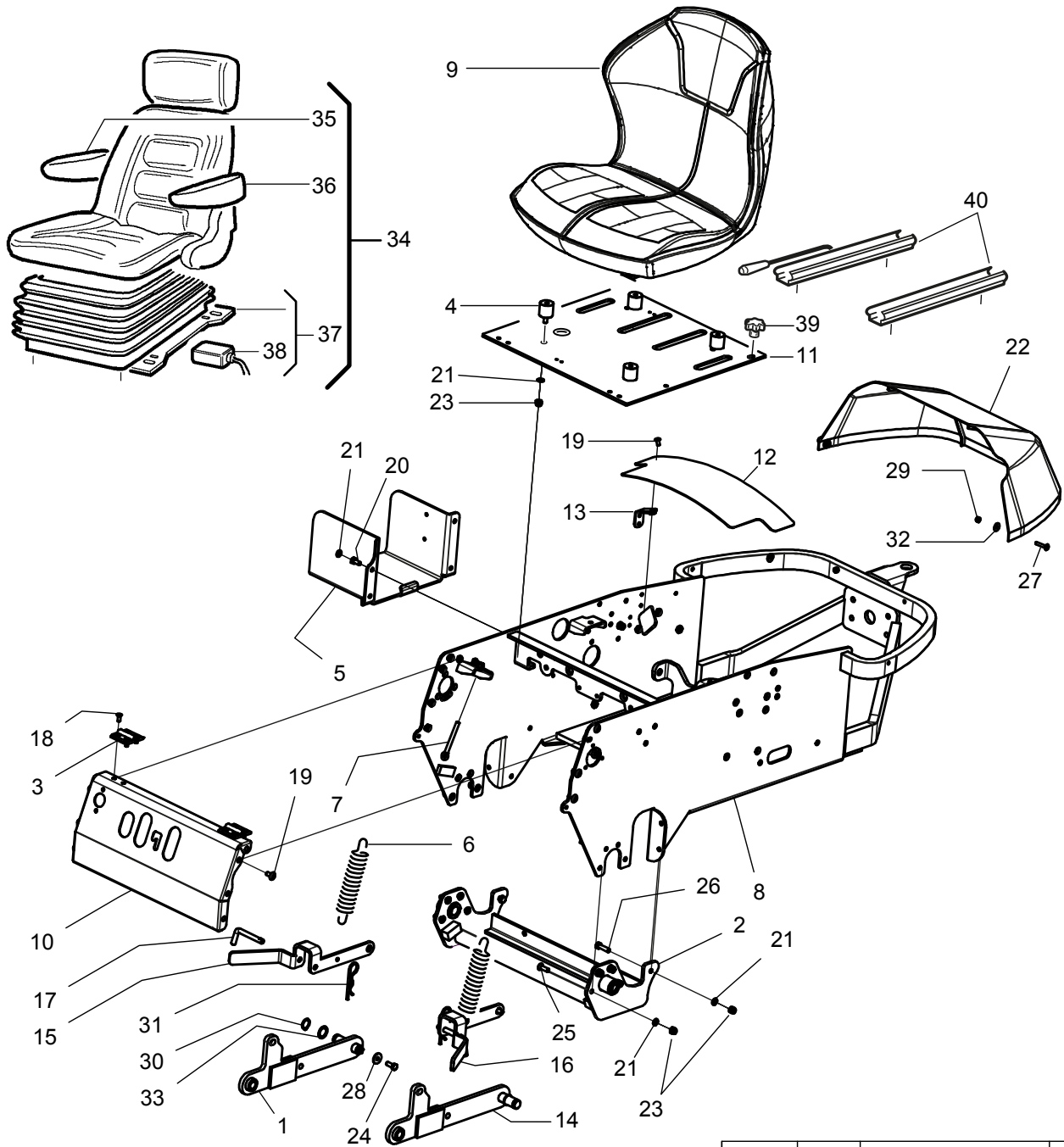


**CATALOGO PARTI DI RICAMBIO
CATALOGUE PIECES DETACHEES
ERSATZTEILKATALOG
PARTS MANUAL**

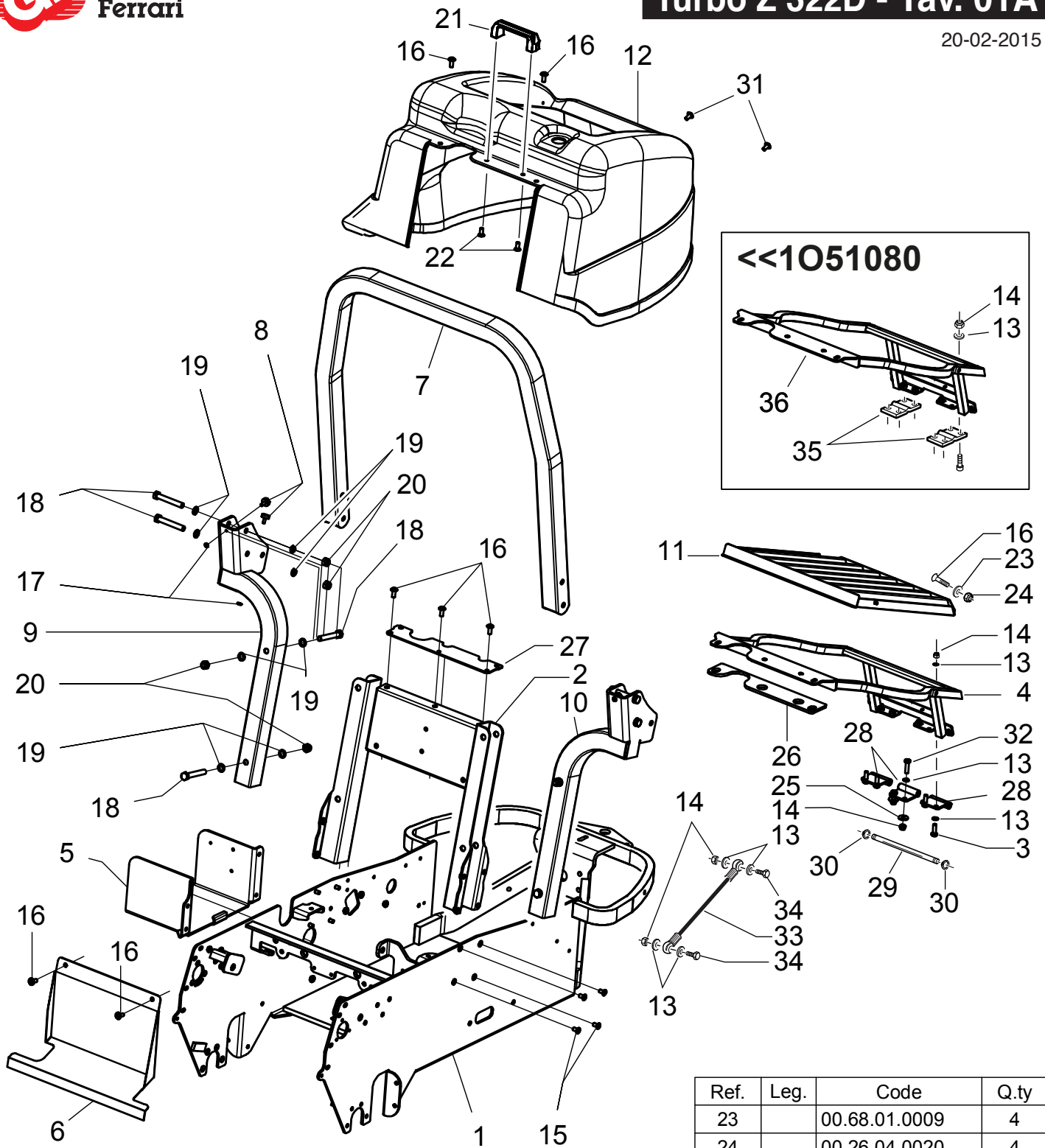
20.02.2015

INDICE • PART LIST • TABLES DES MATRIERES • STÜCK LISTE

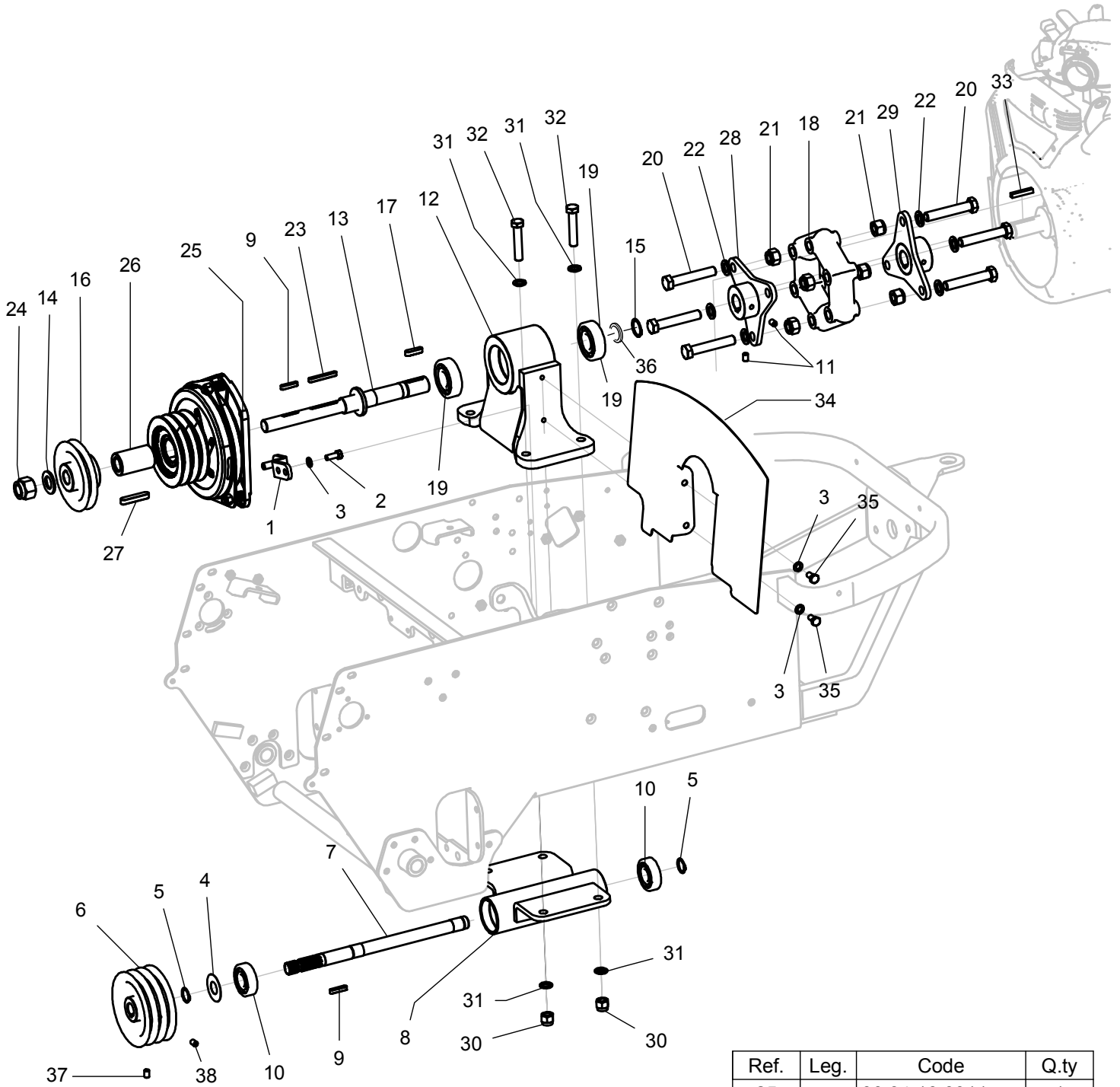
- | | | | |
|----------------------------------|---|----------------------------------|---|
| TAV 01
223 | > TELAIO - SEDILE
FRAME - SEAT
CHASSIS - SIEGE
CHASSIS - SITZ | TAV 07
223-322D | > TRASMISSIONE IDRAULICA
HYDRAULIC TRANSMISSION
TRANSMISSION HYDRAULIQUE
HYDRAULISCHER ANTRIEB |
| TAV 01-A
322D | > TELAIO
FRAME
CHASSIS
CHASSIS | TAV 08
223 | > MOTORE BENZINA
PETROL ENGINE
MOTEUR ESSENCE
BENZIN MOTOR |
| TAV 02
223 | > TRASMISSIONE
TRANSMISSION
TRANSMISSION
ANTRIEB | TAV 09
223 | > IMPIANTO ELETTRICO
ELECTRICAL SYSTEM
EQUIPEMENT ELECTRIQUE
ELEKTRISCHE ANLAGE |
| TAV 02-A
322D | > TRASMISSIONE
TRANSMISSION
TRANSMISSION
ANTRIEB | TAV 09A
322D | > IMPIANTO ELETTRICO
ELECTRICAL SYSTEM
EQUIPEMENT ELECTRIQUE
ELEKTRISCHE ANLAGE |
| TAV 03
223-322D | > LEVE COMANDI
CONTROL LEVERS
LEVIERS COMMANDES
STEUERUNGSHEBELS | TAV 10
223-322D | > BY-PASS
BY-PASS
BY-PASS
BY-PASS |
| TAV 04
223 | > CINGHIE
BELTS
RIEMEN
COURROIES | TAV 11
322D | > RADIATORE
RADIATOR
RADIATEUR
KÜLER |
| TAV 04-A
322D | > CINGHIE
BELTS
RIEMEN
COURROIES | TAV 12
322D | > MOTORE DIESEL
DIESEL ENGINE
MOTEUR DIESEL
DIESEL MOTOR |
| TAV 05
223-322D | > SERBATOI CARBURANTE
FUEL TANKS
RESERVOIRS CARBURANT
KRAFTSTOFF TANKS | TAV 13
322D | > IMPIANTO IDRAULICO
HYDRAULIC SCHEME
EQUIPMENT HYDRAULIQUE
HYDRAULISCHE ANLAGE |
| TAV 06
223-322D | > RUOTE
WHEELS
ROUES
RÄDER | TAV 13
322D | > ZAVORRE
COUNTERWEIGHTS
CONTREPOIDS
GEGENGEWICHTE |



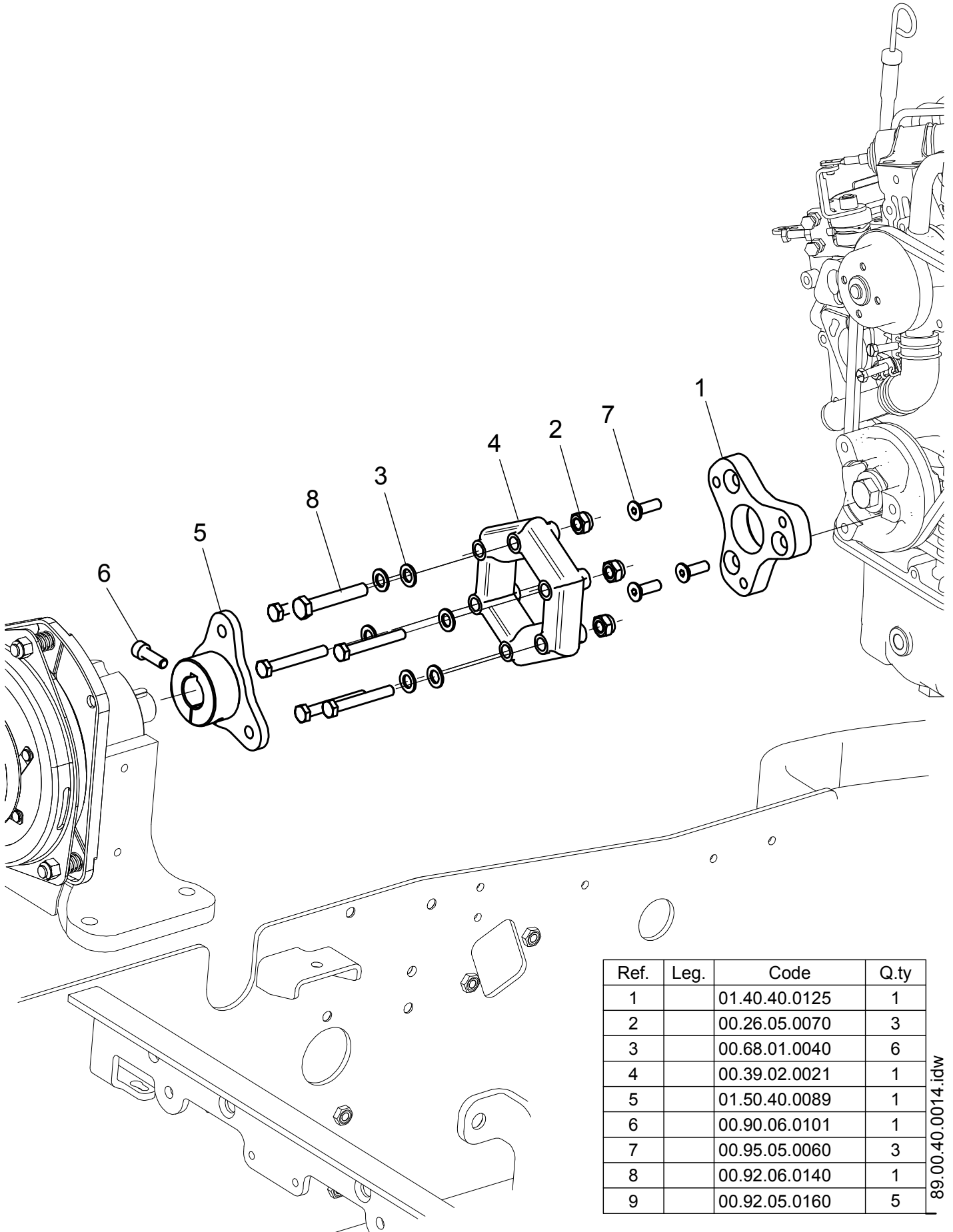
Ref.	Leg.	Code	Q.ty	Ref.	Leg.	Code	Q.ty	Ref.	Leg.	Code	Q.ty
1		01.50.40.0005	1	14		01.50.40.0052	1	27		00.90.04.3070	4
2		01.50.40.0004	1	15		01.60.40.0048	1	28		00.68.02.0050	2
3		00.99.00.0240	2	16		01.60.40.0050	1	29		00.26.05.0040	4
4		00.74.03.0070	4	17		01.50.00.2441	2	30		00.03.00.0160	2
5		01.50.40.0017	1	18		00.95.04.0040	8	31		00.18.00.1010	2
6		00.47.00.0090	2	19		00.90.04.3040	10	32		00.68.02.0030	5
7		00.99.00.0060	2	20		00.92.05.1040	4	33		00.68.06.0167	2
8		01.50.40.0001	1	21		00.68.01.0030	23	34		00.73.00.0030	1
9		00.73.00.0010	1	22		01.50.40.0060	1	35		00.73.00.0033	1
10		01.50.40.0042	1	23		00.26.04.0060	17	36		00.73.00.0034	1
11		01.50.40.0016	1	24		00.92.05.1070	2	37		00.40.00.0562	1
12		01.60.40.0127	1	25		00.95.05.0060	8	38		00.40.00.0561	1
13		01.50.40.0050	2	26		00.92.05.1100	2	39		00.45.00.0006	1
								40		00.73.00.0009	1



Ref.	Leg.	Code	Q.ty	Ref.	Leg.	Code	Q.ty	Ref.	Leg.	Code	Q.ty
1		01.50.40.0062	1	12		01.30.40.0013	1	23		00.68.01.0009	4
2		01.50.40.0020	1	13		00.68.01.0030	30	24		00.26.04.0020	4
3		00.92.05.1080	4	14		00.26.04.0060	14	25		00.68.02.0050	2
4		01.50.40.0109	1	15		00.95.05.0020	8	26		00.07.05.0017	1
5		01.50.40.0077	1	16		00.90.04.3040	11	27		01.50.40.0107	1
6		01.60.40.0251	1	17		00.26.03.0040	4	28		01.50.40.0108	3
7		01.60.40.0252	1	18		00.92.07.0170	8	29		01.40.40.0153	1
8		00.74.00.0017	4	19		00.68.01.0050	16	30		00.03.00.0040	2
9		01.50.40.0079	1	20		00.26.05.0080	8	31		00.90.06.3060	2
10		01.50.40.0080	1	21		00.44.01.0010	1	32		00.92.05.1100	2
11		01.50.40.0085	1	22		00.95.05.0040	2	33		01.50.01.1881	1
								34		00.92.05.1010	2
								35		00.99.00.0250	2
								36		01.50.40.0075	1

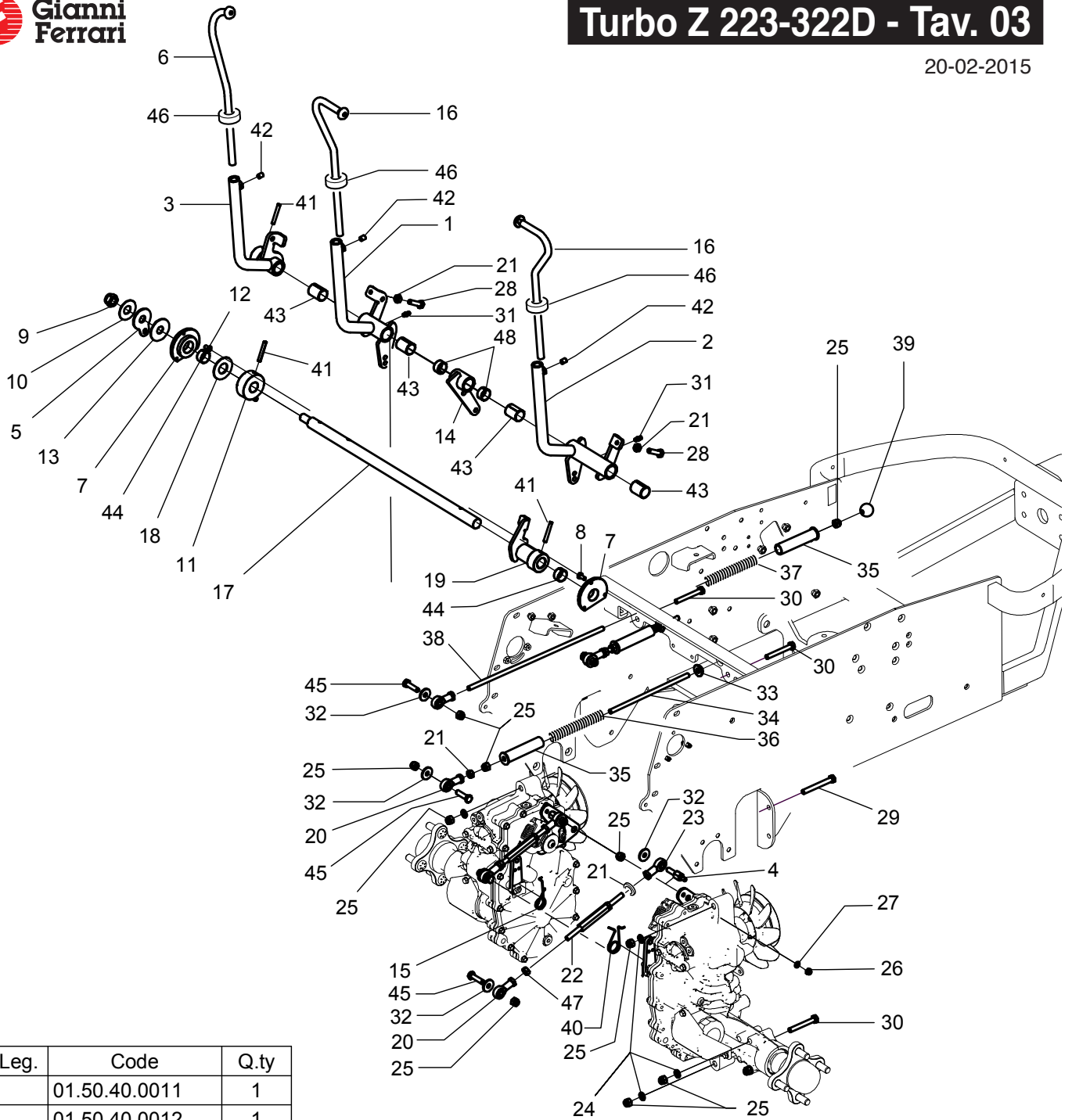


Ref.	Leg.	Code	Q.ty	Ref.	Leg.	Code	Q.ty	Ref.	Leg.	Code	Q.ty
								25		00.34.10.0011	1
								26		01.40.40.0041	1
1		01.50.40.0038	1	13		01.40.40.0038	1	27		00.43.10.0015	1
2		00.92.05.1070	2	14		00.68.01.0090	1	28		01.50.40.0046	1
3		00.68.01.0030	6	15		00.03.10.0025	1	29		01.50.40.0045	1
4		01.40.00.2030	1	16		01.40.40.0015	1	30		00.26.04.0080	4
5		00.03.00.0160	2	17		00.43.08.0030	1	31		00.68.01.0050	8
6		01.40.40.0009	1	18		00.39.02.0020	1	32		00.92.07.0130	4
7		01.40.40.0008	1	19		00.22.25.6201	2	33		00.55.02.0090	1
8		01.50.40.0003	1	20		00.92.08.0160	6	34		01.60.40.0126	1
9		00.43.00.0110	2	21		00.26.04.0090	6	35		00.92.05.1040	4
10		00.22.20.5202	2	22		00.68.01.0060	6	36		00.68.07.0025	1
11		00.96.05.0030	4	23		00.43.00.0150	1	37		00.96.05.2120	1
12		01.50.40.0018	1	24		00.26.04.0120	1	38		00.96.05.0120	1



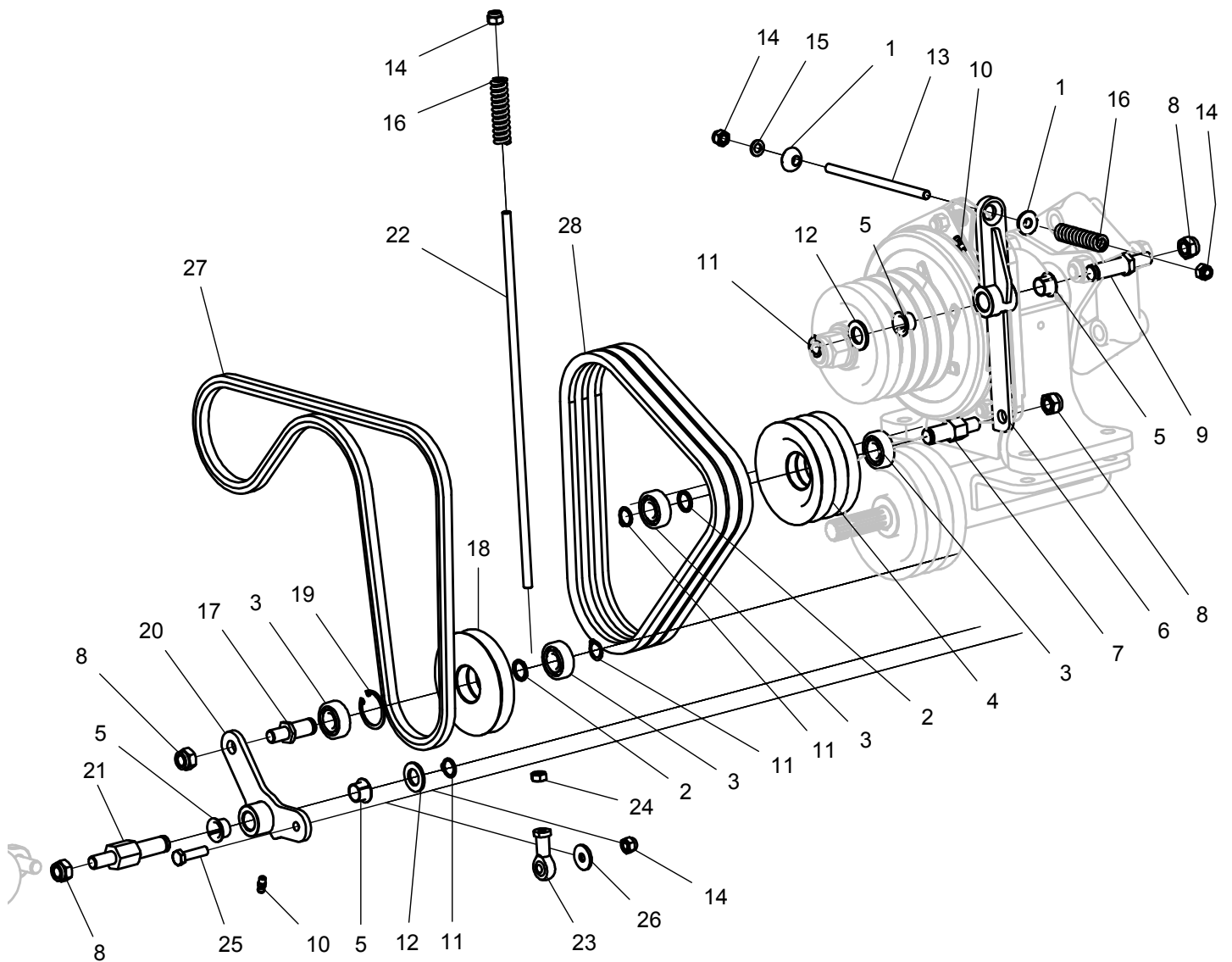
Ref.	Leg.	Code	Q.ty
1		01.40.40.0125	1
2		00.26.05.0070	3
3		00.68.01.0040	6
4		00.39.02.0021	1
5		01.50.40.0089	1
6		00.90.06.0101	1
7		00.95.05.0060	3
8		00.92.06.0140	1
9		00.92.05.0160	5

89.00.40.0014.idw

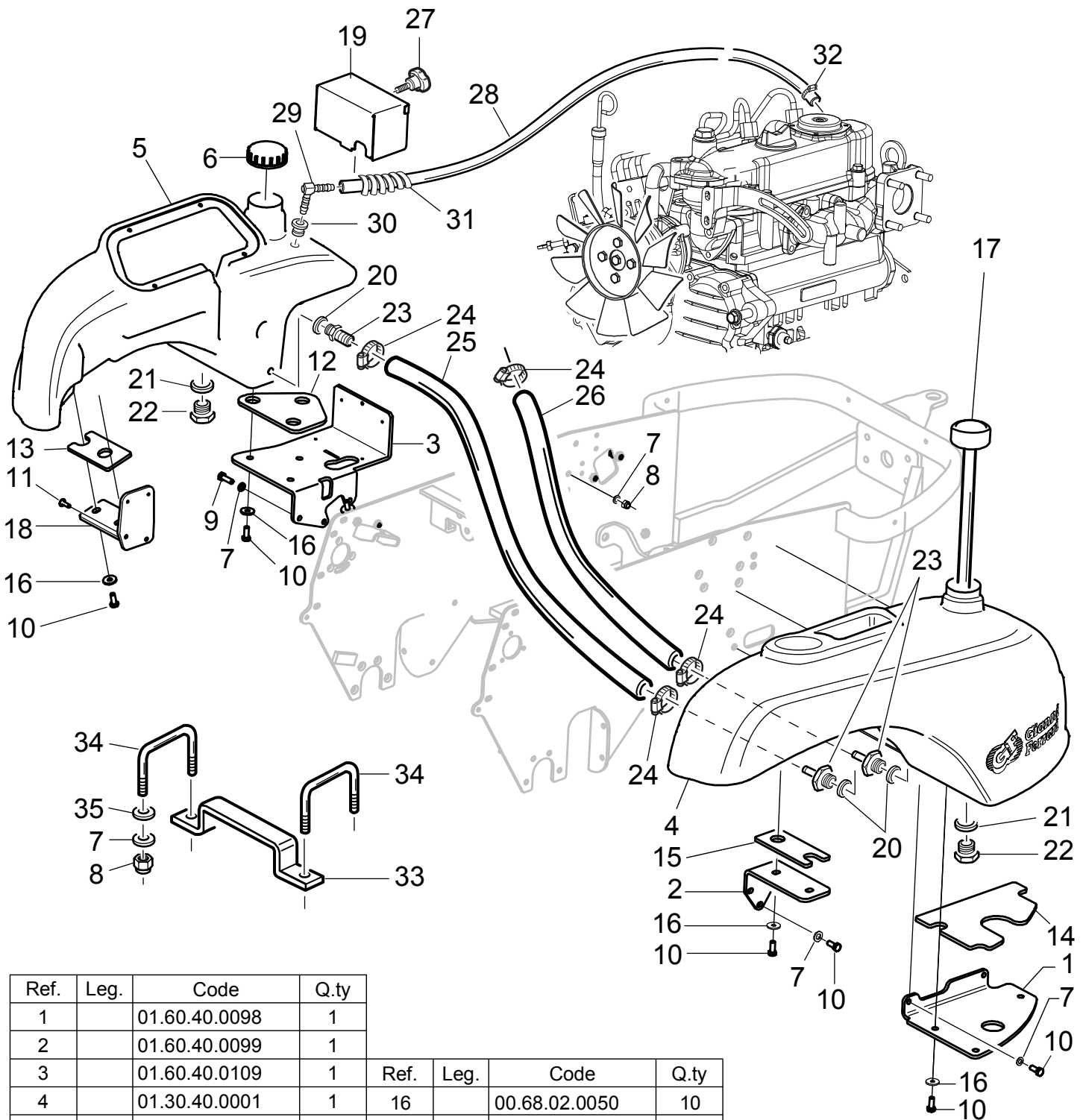


Ref.	Leg.	Code	Q.ty
1		01.50.40.0011	1
2		01.50.40.0012	1
3		01.50.40.0014	1
4		01.40.40.0028	2
5		01.60.40.0027	1
6		01.50.40.0024	1
7		01.40.40.0068	2
8		00.92.03.1030	3
9		00.26.05.1090	1
10		00.48.00.0183	1
11		01.50.40.0015	1
12		00.95.04.0020	3
13		01.40.40.0042	1
14		01.50.40.0047	1
15		00.47.40.0002	1
16		01.50.40.0023	2
17		01.40.40.0021	1
18		01.40.40.0085	1

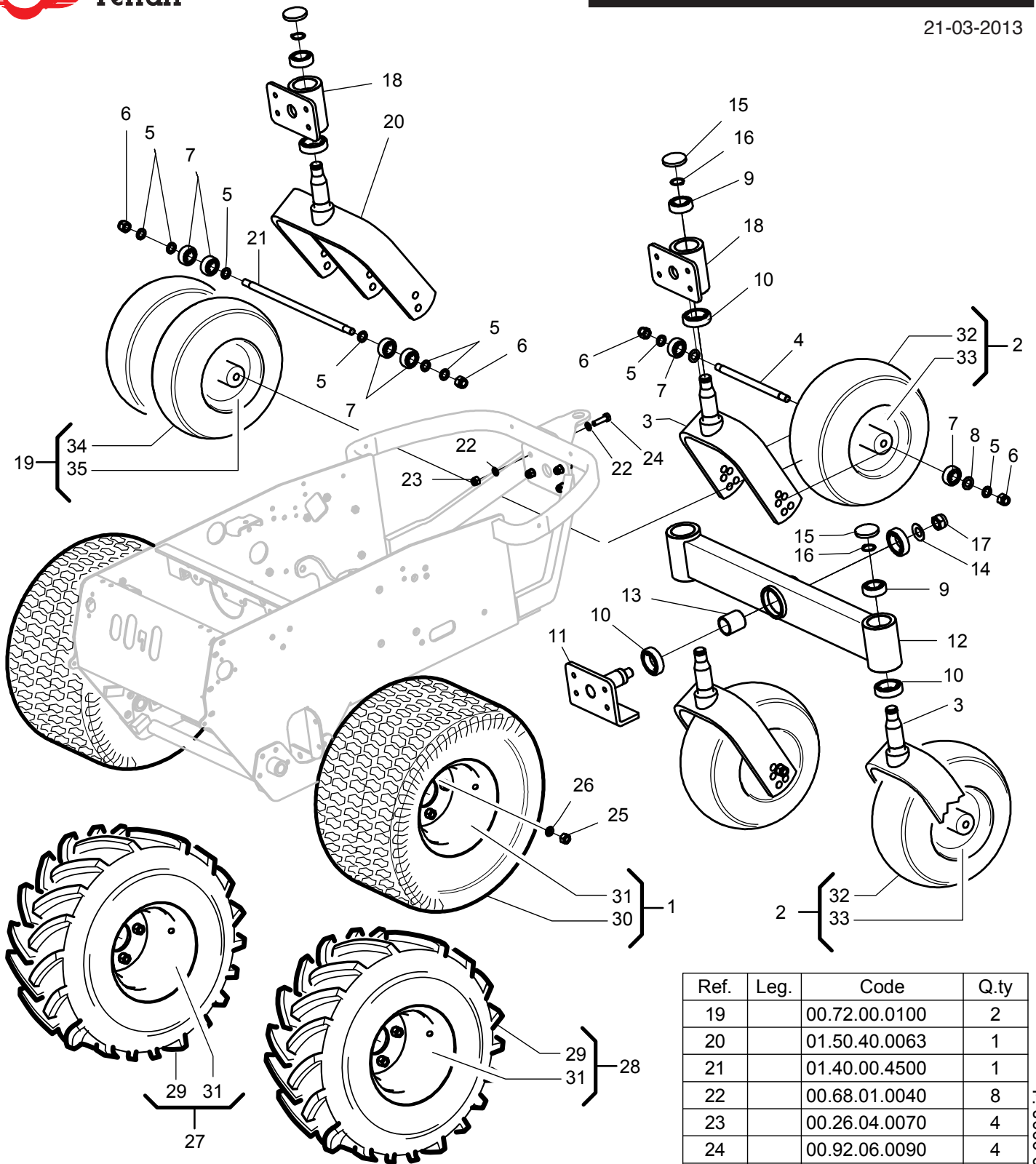
Ref.	Leg.	Code	Q.ty	Ref.	Leg.	Code	Q.ty
19		01.50.40.0057	1	34		01.40.40.0073	2
20		00.78.01.0011	5	35		01.50.40.0049	3
21		00.26.01.0060	6	36		00.47.00.0200	2
22		01.40.40.0030	2	37		00.47.40.0011	1
23		00.78.01.0008	2	38		01.50.40.0051	1
24		00.68.01.0030	8	39		00.45.01.0208	1
25		00.26.04.0060	18	40		00.47.40.0003	1
26		00.26.05.0040	2	41		00.83.12.0040	3
27		00.68.01.0020	2	42		00.96.05.0020	3
28		00.92.05.1100	4	43		00.10.00.0031	4
29		00.92.05.0180	4	44		00.10.20.0016	4
30		00.92.05.0160	4	45		00.90.06.3120	3
31		00.42.00.0020	2	46		01.40.40.0122	3
32		00.68.02.0050	7	47		00.26.01.0065	2
33		01.20.00.0030	2	48		00.10.20.0020	2



Ref.	Leg.	Code	Q.ty	Ref.	Leg.	Code	Q.ty
1		01.20.00.0030	2	15		00.68.01.0030	1
2		01.40.00.1090	2	16		00.47.00.0101	2
3		00.22.00.0100	4	17		01.40.40.0005	1
4		01.40.40.0034	1	18		01.40.40.0016	1
5		00.10.20.1013	4	19		00.03.01.0160	1
6		01.50.40.0002	1	20		01.50.40.0048	1
7		01.40.40.0043	1	21		01.40.40.0004	1
8		00.26.04.0080	4	22		01.40.40.0062	1
9		01.40.40.0044	1	23		00.78.01.0011	1
10		00.42.00.0010	2	24		00.26.02.0060	1
11		00.03.00.0110	4	25		00.92.05.1100	1
12		00.68.08.0414	2	26		00.68.02.0050	1
13		01.40.40.0035	1	27		00.17.20.0001	1
14		00.26.04.0060	4	28		00.17.30.0001	3

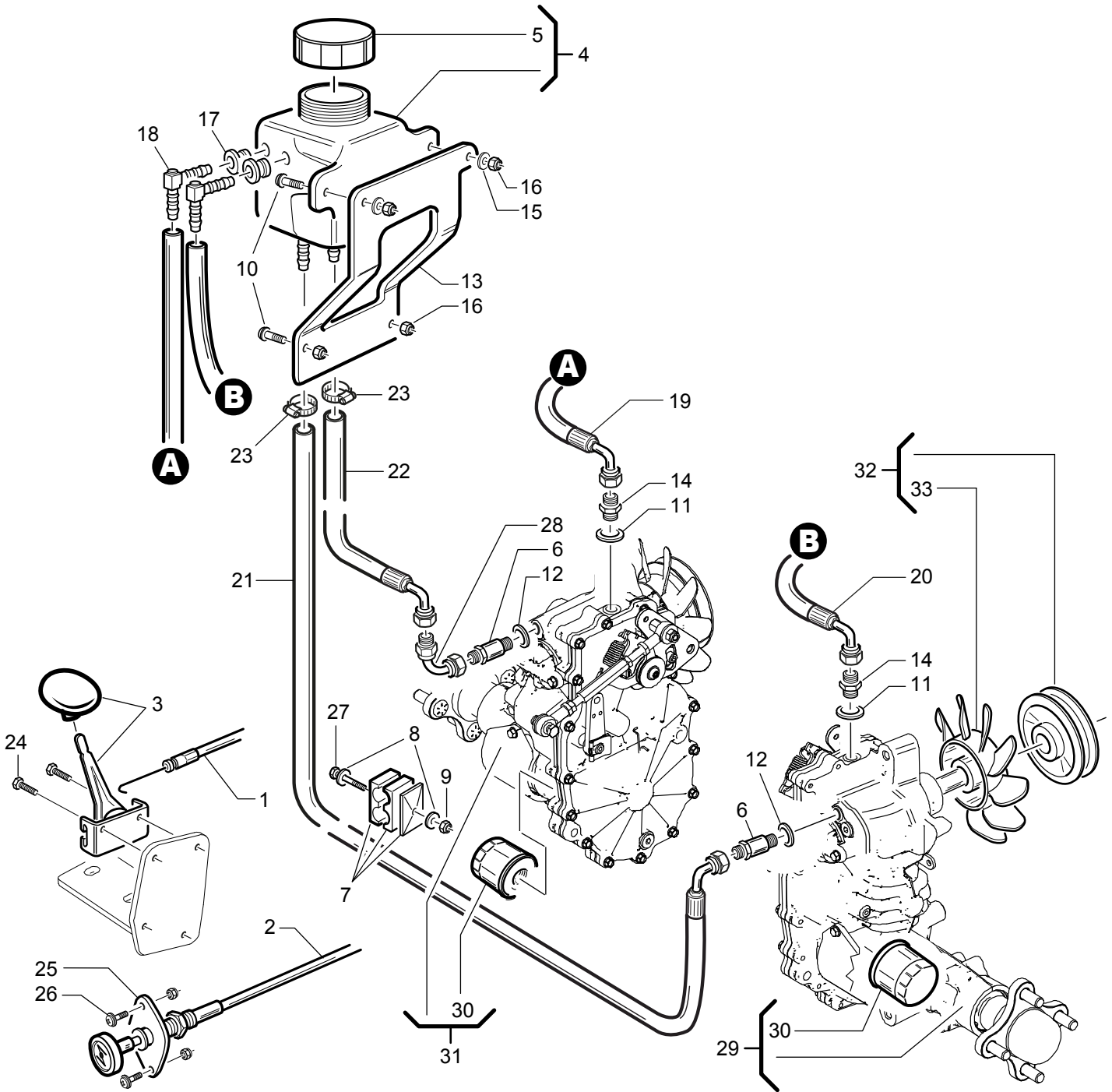


Ref.	Leg.	Code	Q.ty	Ref.	Leg.	Code	Q.ty	Ref.	Leg.	Code	Q.ty
1		01.60.40.0098	1								
2		01.60.40.0099	1								
3		01.60.40.0109	1	16		00.68.02.0050	10	27		00.45.01.0115	1
4		01.30.40.0001	1	17		00.75.00.0009	1	28	TZ322D	00.89.01.0000	0,9m
5		01.30.40.0002	1	18		01.50.40.0061	1	29	TZ322D	00.75.00.0015	1
6		00.75.00.0012	1	19		01.60.40.0163	1	30	TZ322D	00.75.00.0014	1
7		00.68.01.0030	13	20		00.06.10.0202	3	31	TZ322D	00.07.01.0181	0,8
8		00.26.04.0060	5	21		00.06.10.0154	2	32	TZ322D	00.29.02.1010	1
9		00.92.05.1080	1	22		00.75.00.0036	2	33		01.60.40.0215	1
10		00.92.05.1070	17	23		00.75.00.0035	3	34		01.40.40.0097	2
11		00.90.04.3070	2	24		00.29.10.0030	4	35		00.26.02.0060	4
12		00.07.05.0014	1	25		00.89.02.0000	0,7m				
13		00.07.05.0013	1	26	TZ223	00.89.02.0000	0,5m				
14		00.07.05.0016	1	26	TZ322D	00.89.02.0000	0,7m				
15		00.07.05.0015	1								

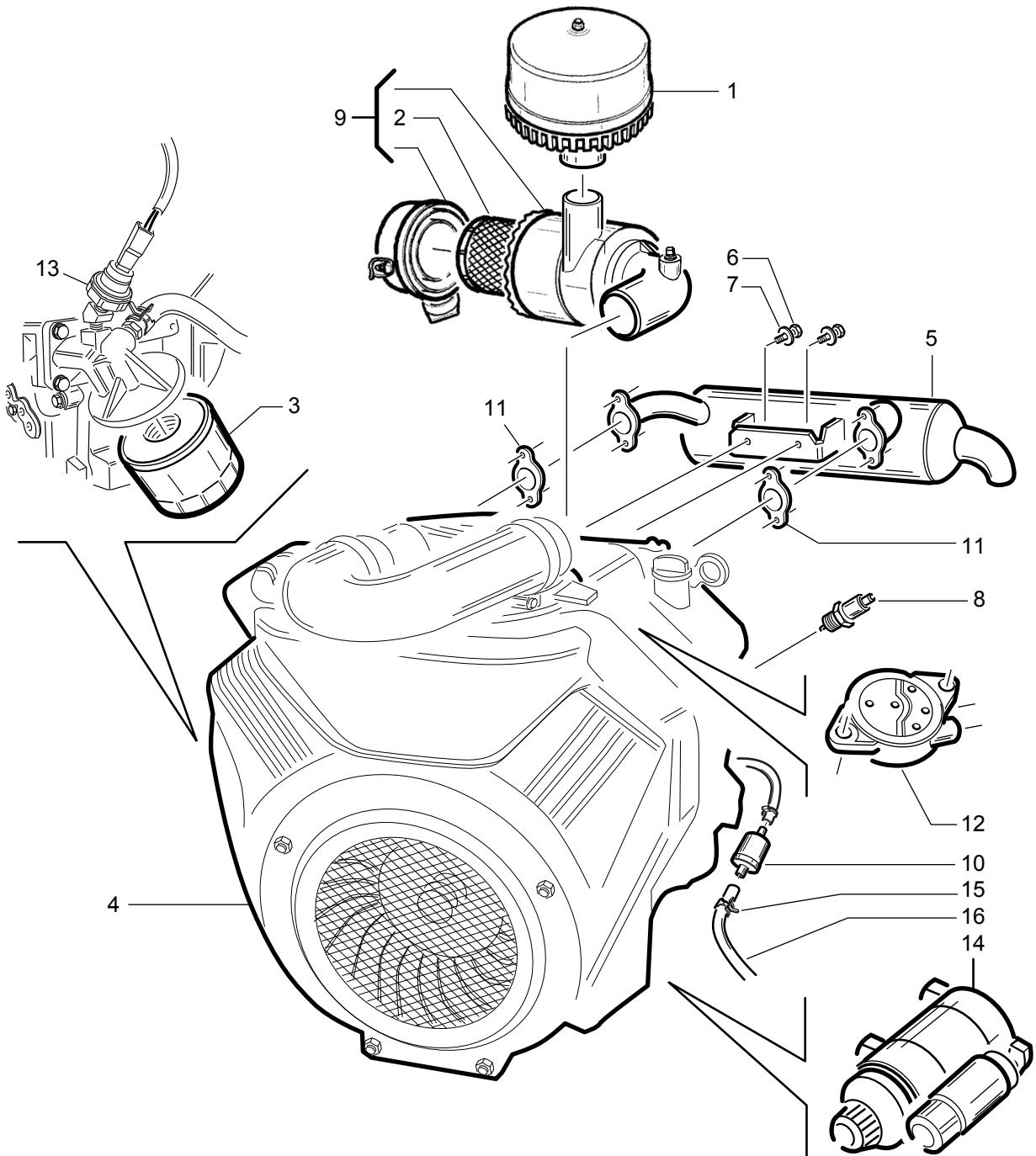


Ref.	Leg.	Code	Q.ty
19		00.72.00.0100	2
20		01.50.40.0063	1
21		01.40.00.4500	1
22		00.68.01.0040	8
23		00.26.04.0070	4
24		00.92.06.0090	4
25		00.26.00.0001	8
26		00.68.05.0010	8
27		00.72.40.0012	1
28		00.72.40.0013	1
29		00.59.00.0052	2
30		00.59.00.0072	2
31		00.16.40.0080	2
32		00.59.00.0120	3
33		00.16.00.0050	3
34		00.59.00.0110	2
35		00.16.00.0140	2

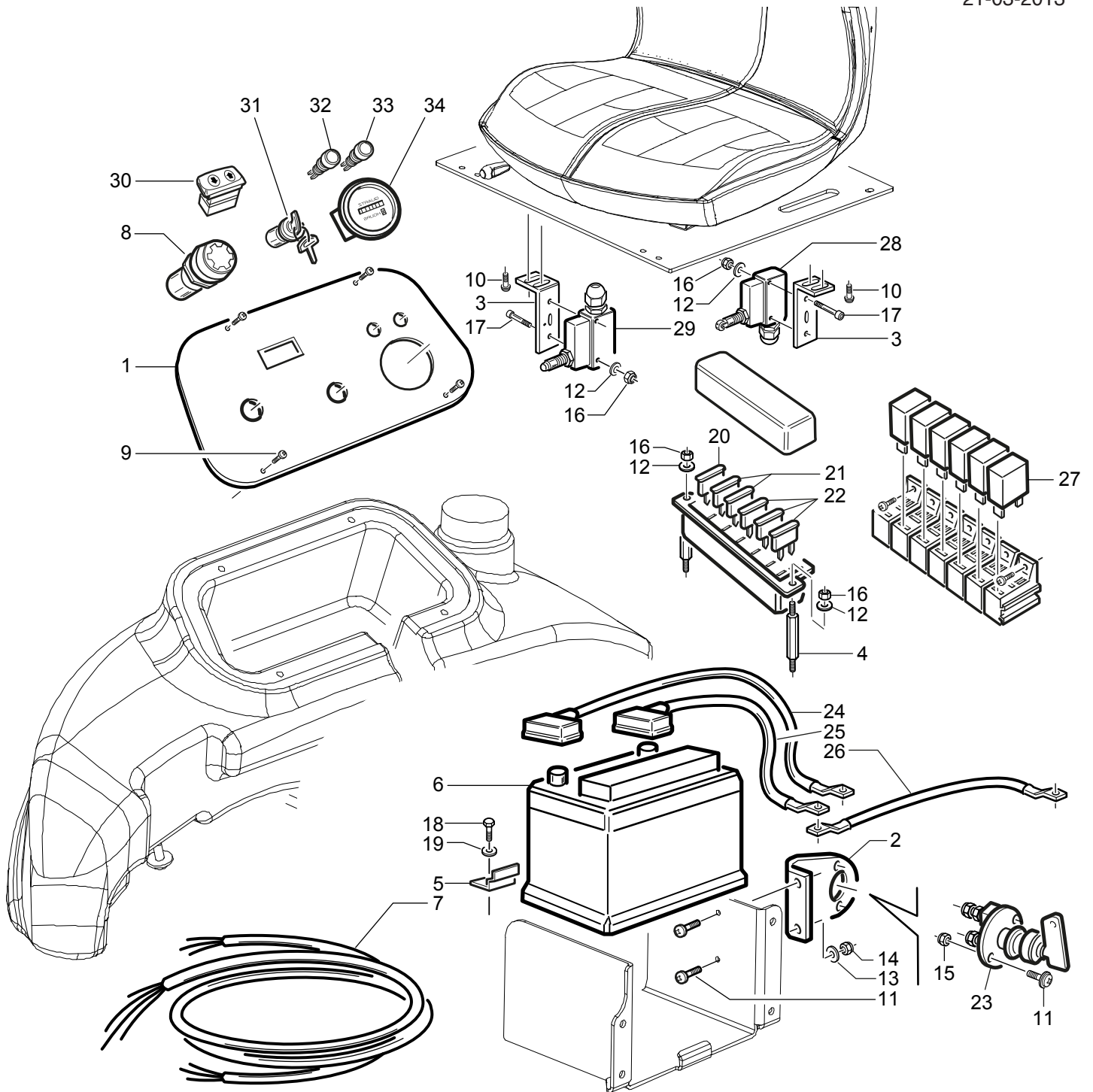
Ref.	Leg.	Code	Q.ty	Ref.	Leg.	Code	Q.ty
1		00.72.40.0011	2	10		00.22.00.0222	6
2		00.72.00.0110	3	11		01.50.40.0009	1
3		01.50.00.1041	3	12		01.50.40.0010	1
4		01.40.00.0470	3	13		01.40.40.0020	1
5		00.68.01.0060	12	14		00.48.00.0186	1
6		00.26.04.1090	8	15		00.07.06.0020	4
7		00.22.15.4201	10	16		00.03.00.0210	4
8		00.68.01.0070	6	17		00.26.05.1120	1
9		00.22.25.5201	4	18		01.50.40.0008	2



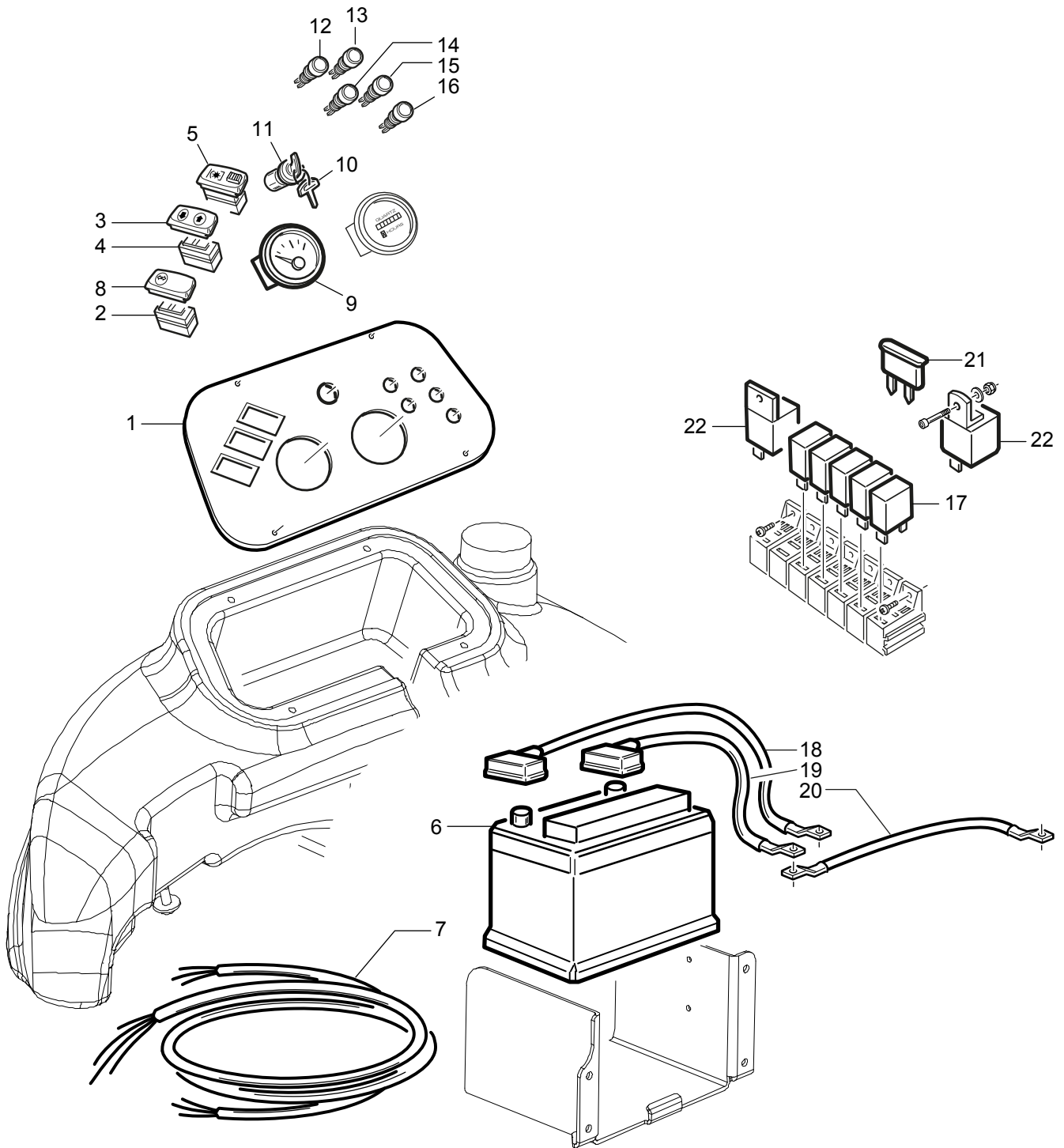
Ref.	Leg.	Code	Q.ty	Ref.	Leg.	Code	Q.ty	Ref.	Leg.	Code	Q.ty
1	TZ223	00.25.01.0200	1	13		01.60.40.0090	1	26		00.90.04.3030	2
1	TZ322D	00.25.01.0202	1	14		00.41.00.0809	2	27		00.92.05.0170	1
2		00.25.01.0201	1	15		00.68.01.0020	2	28		00.41.00.0921	1
3		00.25.02.0035	1	16		00.26.05.0040	2	29	TZ223	00.41.00.3900	1
4		00.75.00.0075	1	17		00.75.00.0014	2	29	TZ322D	00.41.00.3910	1
5		00.75.00.0076	1	18		00.75.00.0015	2	30		00.32.40.0010	2
6		00.41.00.0119	2	19		00.41.40.0001	1	31	TZ223	00.41.00.3912	1
7		00.41.00.0442	1	20		00.41.40.0002	1	31	TZ322D	00.41.00.3913	1
8		00.68.01.0030	2	21		00.41.40.0004	1	32	TZ223	00.55.00.0013	2
9		00.26.04.0060	1	22		00.41.40.0003	1	32	TZ322D	00.55.00.0012	2
10		00.90.04.3070	4	23		00.29.02.0016	2	33	TZ223	00.55.00.0011	2
11		00.06.04.0093	2	24		00.92.02.1030	2	33	TZ322D	00.55.00.0010	2
12		00.06.07.0108	2	25		01.50.40.0041	1				



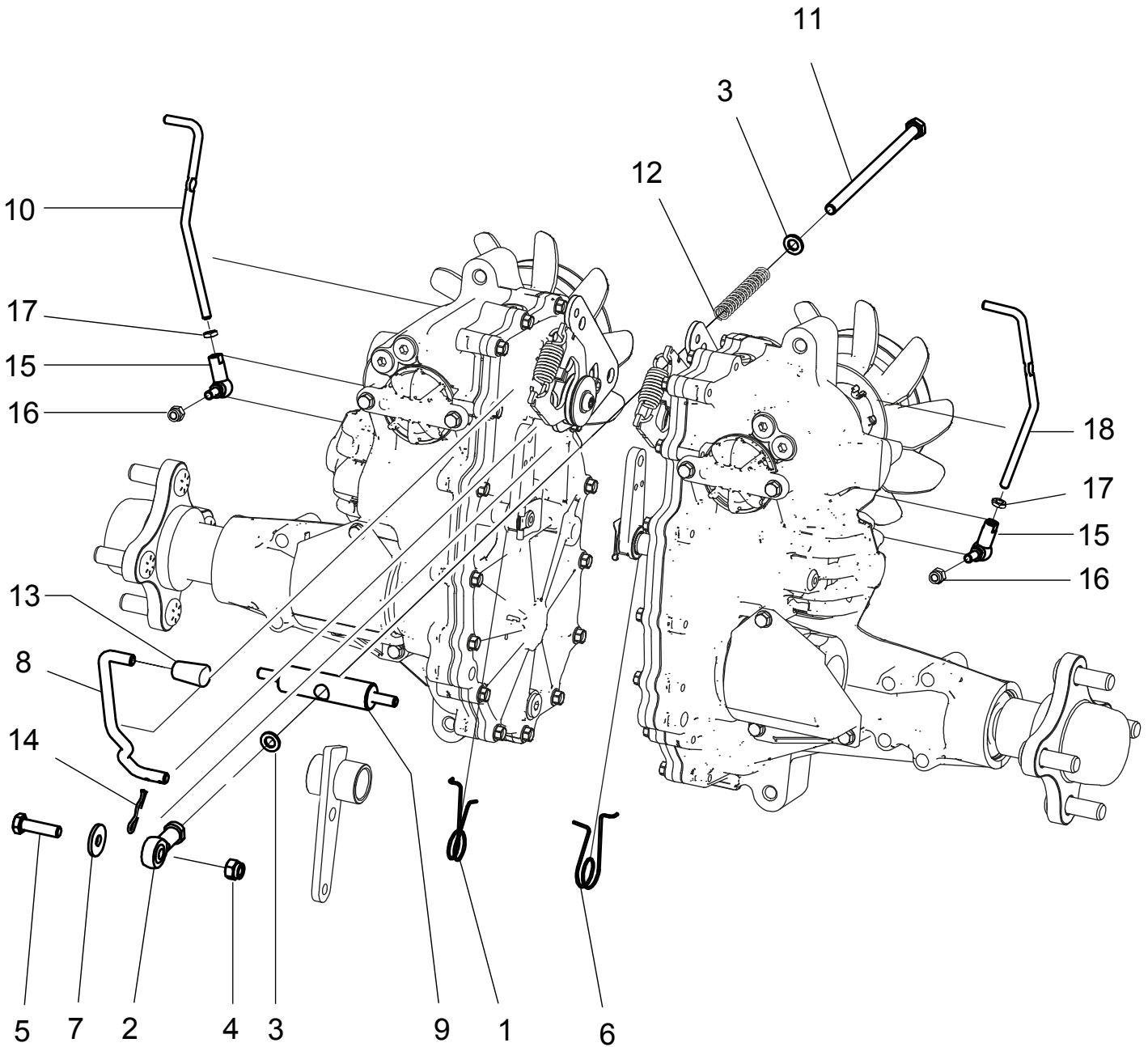
Ref.	Leg.	Code	Q.ty	Ref.	Leg.	Code	Q.ty	Ref.	Leg.	Code	Q.ty
1		00.32.03.0180	1	7		00.68.01.0050	2	13		00.55.02.0075	1
2		00.32.01.0090	1	8		00.55.02.0020	2	14		00.55.02.0255	1
3		00.32.01.0010	1	9		00.32.01.0080	1	15		00.29.10.0030	1
4		00.54.00.0016	1	10		00.32.01.0065	1	16		00.89.01.0000	0,5 m
5		00.46.40.0010	1	11		00.55.02.0110	2				
6		00.93.04.0055	2	12		00.55.02.0050	1				



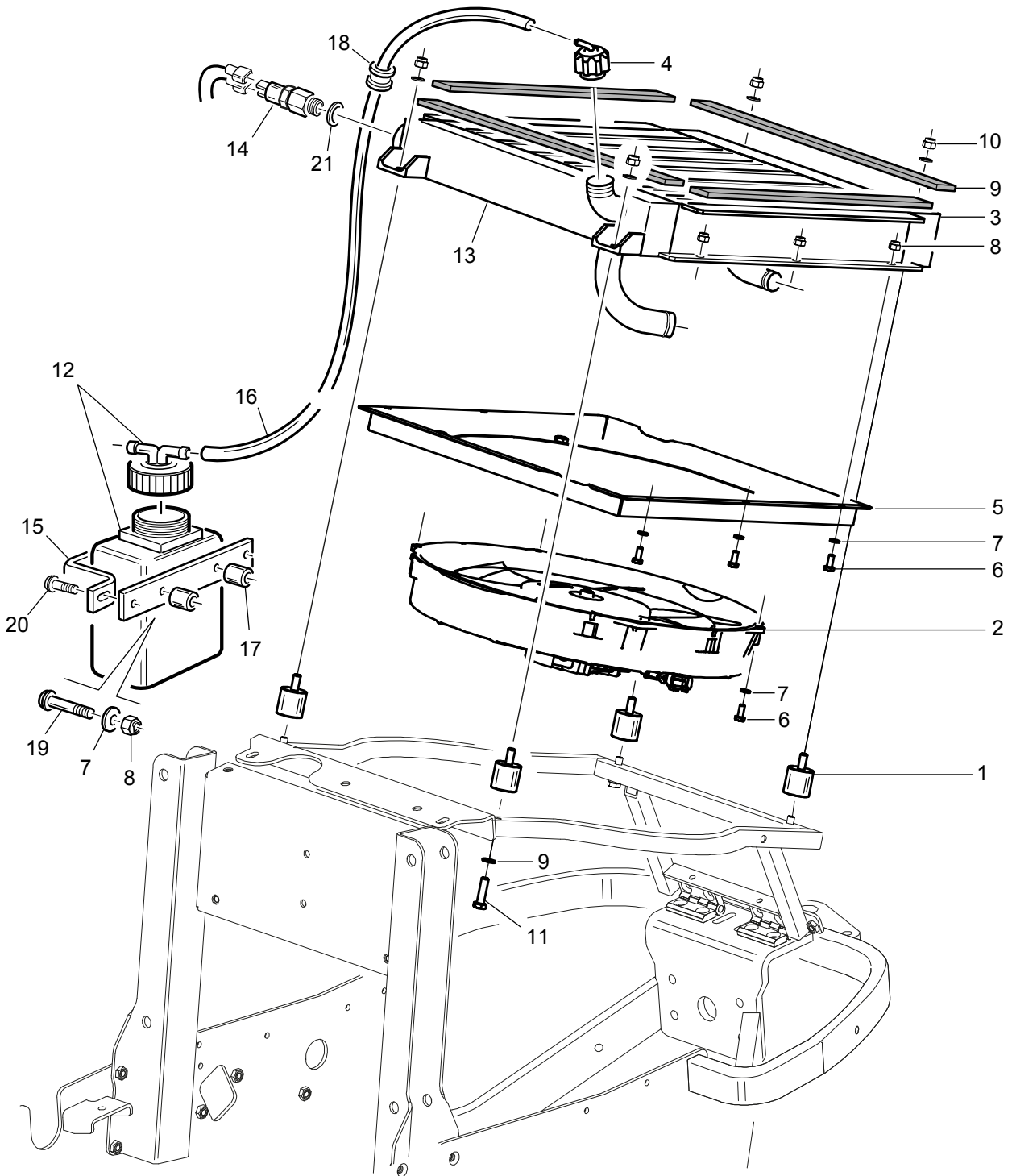
Ref.	Leg.	Code	Q.ty	Ref.	Leg.	Code	Q.ty	Ref.	Leg.	Code	Q.ty
1		01.60.40.0133	1	13		00.68.01.0020	2	25		00.40.00.0277	1
2		01.60.40.0135	1	14		00.26.04.0040	2	26		00.40.00.0279	1
3		01.60.40.0136	2	15		00.26.05.0040	2	27		00.40.00.0175	6
4		01.40.40.0084	2	16		00.26.04.0020	6	28		00.40.00.0047	1
5		01.60.20.0069	1	17		00.90.02.0110	4	29		00.40.00.0754	1
6		00.09.00.0020	1	18		00.92.05.1040	1	30		00.40.00.2277	1
7		00.40.00.0010	1	19		00.68.01.0030	1	31		00.40.00.0083	1
8		00.40.00.2235	1	20		00.40.00.0799	1	32		00.40.00.1121	1
9		00.91.05.1040	4	21		00.40.00.0803	2	33		00.40.00.1130	1
10		00.90.04.3030	4	22		00.40.00.0804	3	34		00.40.00.0100	1
11		00.90.04.3070	4	23		00.40.00.2090	1				
12		00.68.03.0010	4	24		00.40.00.0278	1				



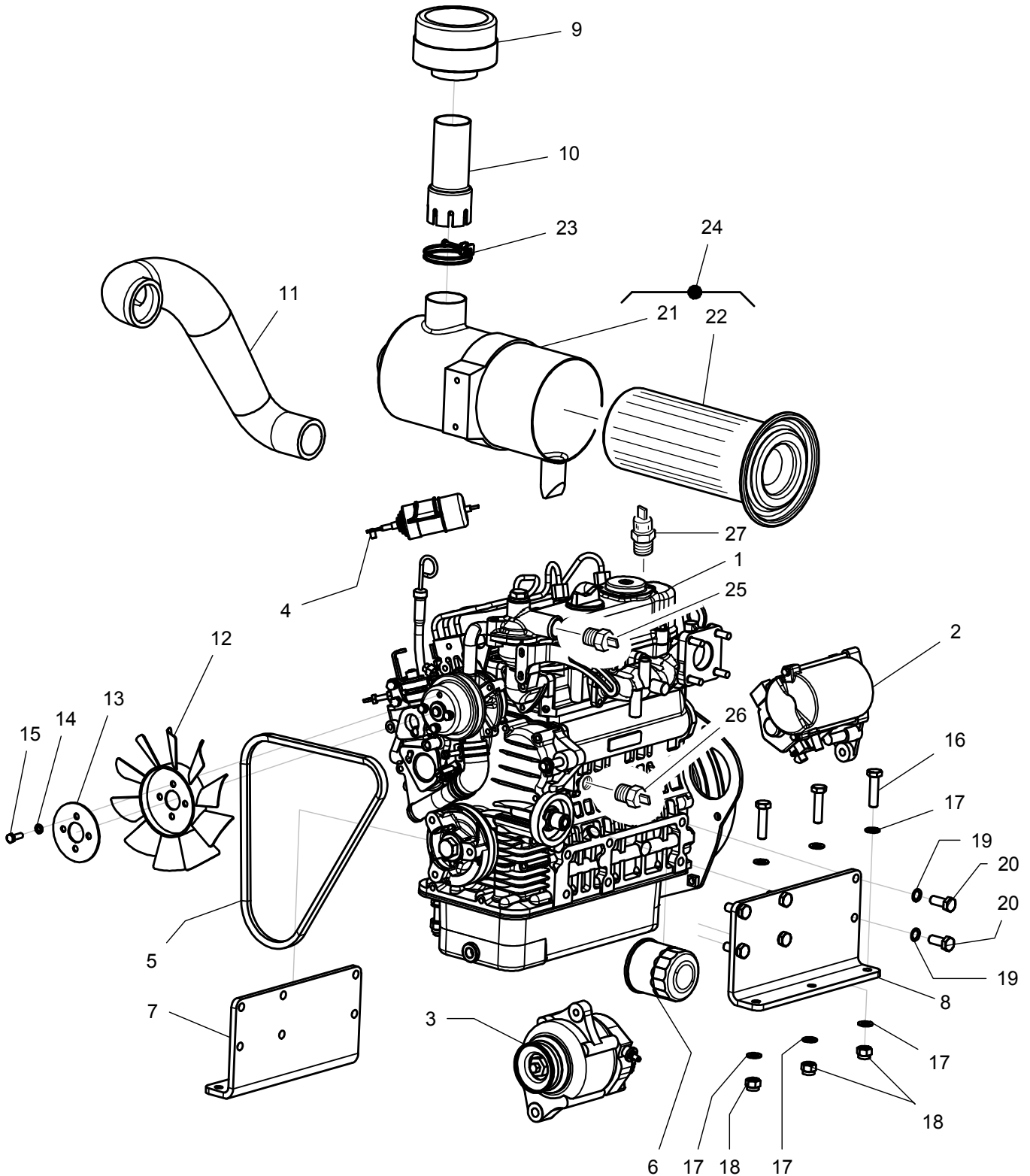
Ref.	Leg.	Code	Q.ty	Ref.	Leg.	Code	Q.ty	Ref.	Leg.	Code	Q.ty
1		01.60.40.0100	1	9		00.40.00.0390	1	17		00.40.00.0163	5
2		00.40.00.2292	1	10		00.40.00.0091	1	18		00.40.00.0278	1
3		00.40.00.2277	1	11		00.55.01.0091	1	19		00.40.00.0277	1
4		00.40.00.2276	1	12		00.40.00.1130	1	20		00.40.00.0279	1
5		00.40.00.2293	1	13		00.40.00.1120	1	21		00.40.00.0800	1
6		00.09.00.0030	1	14		00.40.00.1121	1	22		00.40.00.0166	2
7		00.40.00.0015	1	15		00.40.00.1120	1				
8		00.40.00.2274	1	16		00.40.00.1124	1				



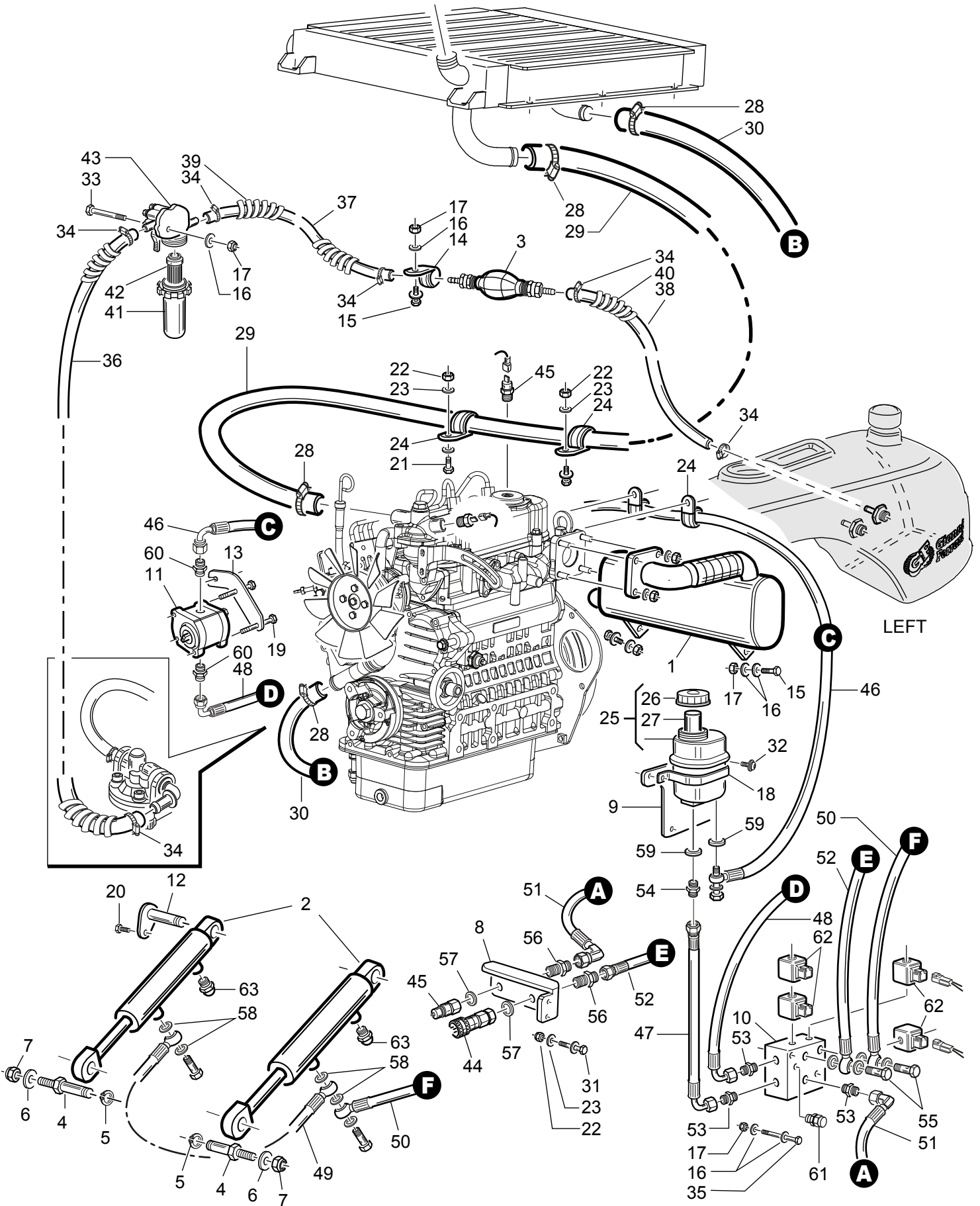
Ref.	Leg.	Code	Q.ty	Ref.	Leg.	Code	Q.ty	Ref.	Leg.	Code	Q.ty
1		00.47.40.0002	1	7		00.68.02.0050	1	13		00.07.03.0010	1
2		00.78.01.0011	1	8		01.60.40.0134	1	14		00.18.00.1011	1
3		00.68.01.0030	2	9		01.40.40.0074	1	15		00.78.00.0010	2
4		00.26.04.0060	1	10		01.60.40.0129	1	16		00.26.04.0040	2
5		00.92.05.1100	1	11		00.92.05.0280	1	17		00.26.03.0040	2
6		00.47.40.0003	1	12		00.47.00.0140	1	18		01.60.40.0414	1



Ref.	Leg.	Code	Q.ty	Ref.	Leg.	Code	Q.ty	Ref.	Leg.	Code	Q.ty
1		00.74.03.0070	4	8		00.26.05.0040	8	15		01.50.20.0485	1
2		00.54.10.0049	1	9		00.68.01.0030	8	16		00.89.10.3000	1,7m
3		00.54.10.0100	1	10		00.26.04.0060	4	17		01.40.00.0491	2
4		00.54.10.0027	1	11		00.92.05.1100	4	18		00.07.08.0060	1
5		01.50.40.0076	1	12		00.75.00.0042	1	19		00.95.04.0110	2
6		00.92.03.1040	10	13		00.54.10.0100	1	20		00.90.04.3070	1
7		00.68.01.0020	12	14		00.54.10.0056	1	21		00.41.00.0216	1

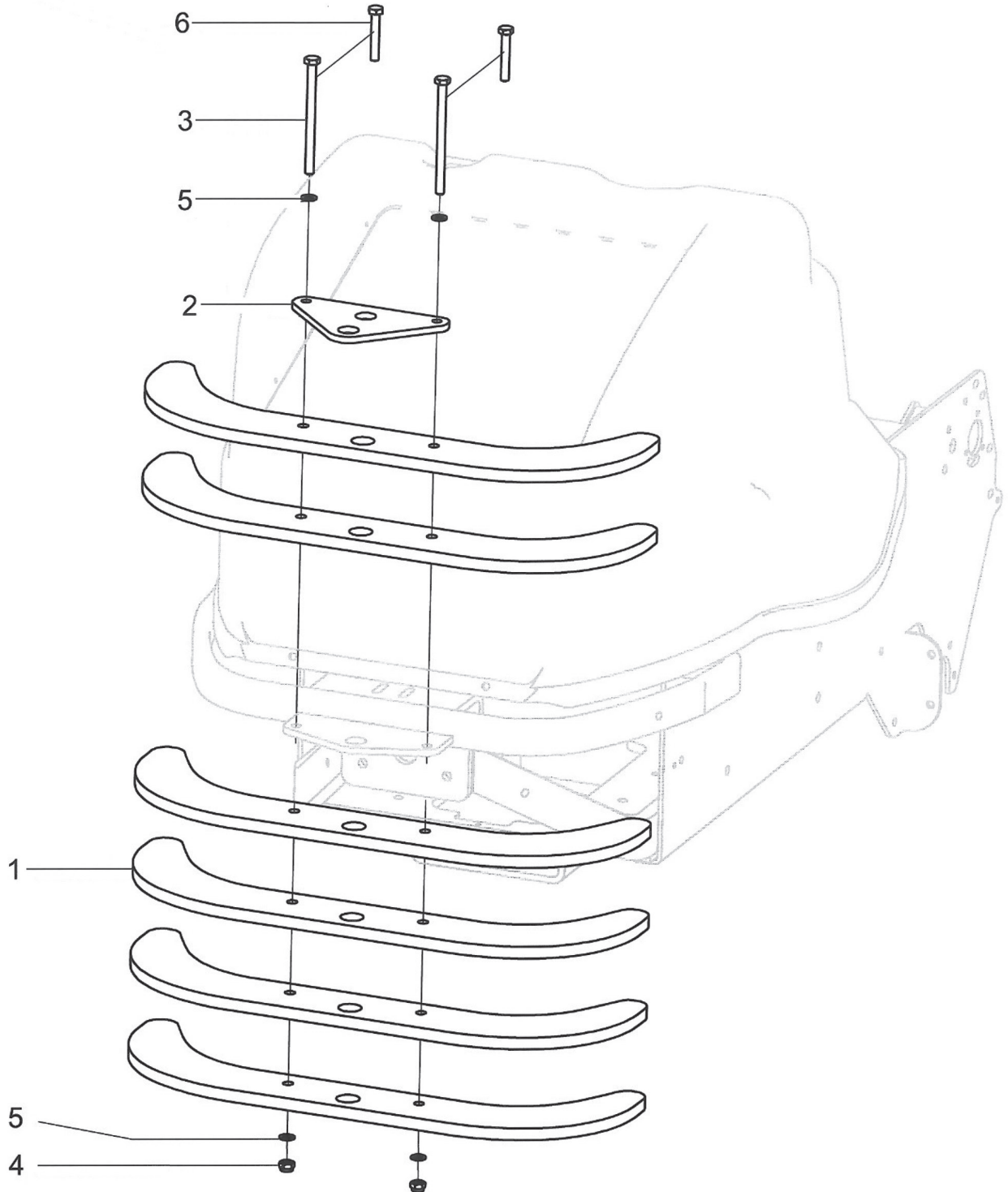


Ref.	Leg.	Code	Q.ty	Ref.	Leg.	Code	Q.ty	Ref.	Leg.	Code	Q.ty
1		00.54.01.0025	1	10		01.60.40.0324	1	19		00.68.12.0010	12
2		00.55.01.0330	1	11		00.07.07.0350	1	20		00.92.06.3050	12
3		00.55.01.0550	1	12		01.30.00.0135	1	21		00.55.01.0410	1
4		00.55.01.0040	1	13		01.60.40.0421	1	22		00.32.03.0060	1
5		00.55.01.0022	1	14		00.68.01.0020	4	23		00.29.04.0140	1
6		00.32.00.0050	1	15		00.92.03.1060	4	24		00.32.00.0030	1
7		01.60.40.0175	1	16		00.92.06.1100	6	25		00.40.00.0571	1
8		01.60.40.0176	1	17		00.68.01.0040	12	26		00.55.01.0120	1
9		00.32.03.0180	1	18		00.26.04.0070	6	27		00.55.01.0200	1



Ref.	Leg.	Code	Q.ty
1		00.46.40.0011	1
2		00.58.40.0001	2
3		00.99.00.0320	1
4		01.40.40.0140	2
5		00.03.10.0016	2
6		00.68.01.0060	2
7		00.26.04.0090	2
8		01.60.40.0404	1
9		01.60.40.0333	1
10		00.41.00.0315	1
11		00.41.00.0719	1
12		01.50.40.0090	1
13		01.60.20.0245	1
14		00.29.01.0075	1
15		00.92.05.1120	3
16		00.68.01.0030	8
17		00.26.04.0060	5
18		01.60.40.0051	1
19		00.92.05.0220	2
20		00.92.05.1070	2
21		00.92.03.1070	2
22		00.26.04.0040	4
23		00.68.01.0020	4
24		00.29.01.0099	4
25		00.75.00.0074	1
26		00.75.00.0032	1
27		00.75.00.0031	1
28		00.29.02.1039	4
29		00.89.14.0001	1,64 m
30		00.07.07.0070	1,40 m
31		00.92.03.1090	2
32		00.90.04.3030	2

Ref.	Leg.	Code	Q.ty
33		00.92.05.0180	2
34		00.29.02.0016	6
35		00.92.05.0200	2
36		00.89.02.0000	0,40 m
37		00.89.02.0000	1m
38		00.89.02.0000	0,60 m
39		00.07.01.0181	1 m
40		00.07.01.0181	0,60 m
41		00.55.01.0100	1
42		00.32.00.0010	1
43		00.55.01.0220	1
44		00.41.00.0460	1
45		00.41.00.0470	1
46		00.41.40.0008	1
47		00.41.40.0010	1
48		00.41.40.0009	1
49		00.41.40.0006	1
50		00.41.40.0005	1
51		00.41.40.0007	1
52		00.41.40.0012	1
53		00.41.00.0450	3
54		00.41.00.0100	1
55		00.41.00.0120	2
56		00.41.00.0360	2
57		00.41.00.0370	2
58		00.41.00.1291	10
59		00.41.00.1290	3
60		00.41.00.0131	2
61		00.41.00.0469	1
62		00.40.00.2273	4
63		00.41.00.0048	2



Ref.	Leg.	Code	Q.ty	Ref.	Leg.	Code	Q.ty	Ref.	Leg.	Code	Q.ty
1		01.60.40.0325	6	3	40 kg	00.92.06.0250	2	5		00.68.01.0040	4
2		01.60.40.0327	1	4		00.26.04.0070	2	6	20 kg	00.92.06.0140	2



Advanced Groundcare Solutions™

